

Aneurisma vertebral incidental-Tratamiento con Stent FD Evolve.

Aneurisma incidental en arteria vertebral intradural.

Aneurisma de cuello ancho y n relación con la arteria Pica.

Tratamiento con **Stent Flow Diverter Evolve.**

Aneurysm classification:

1= Proximal VA

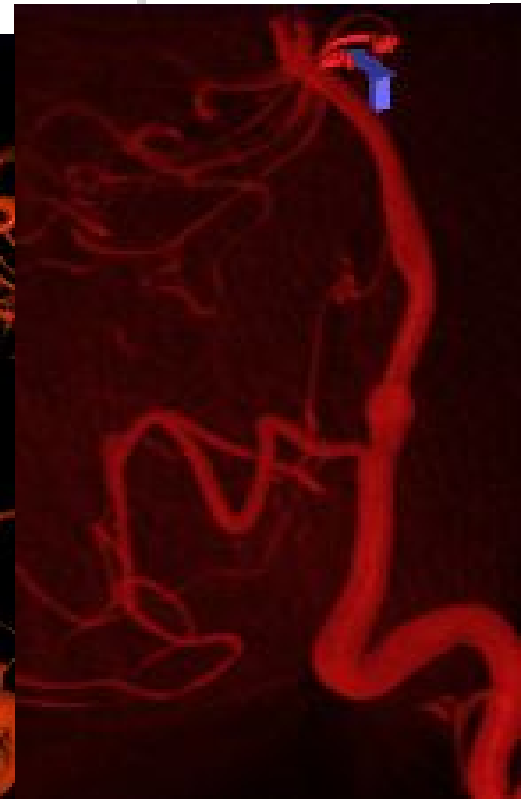
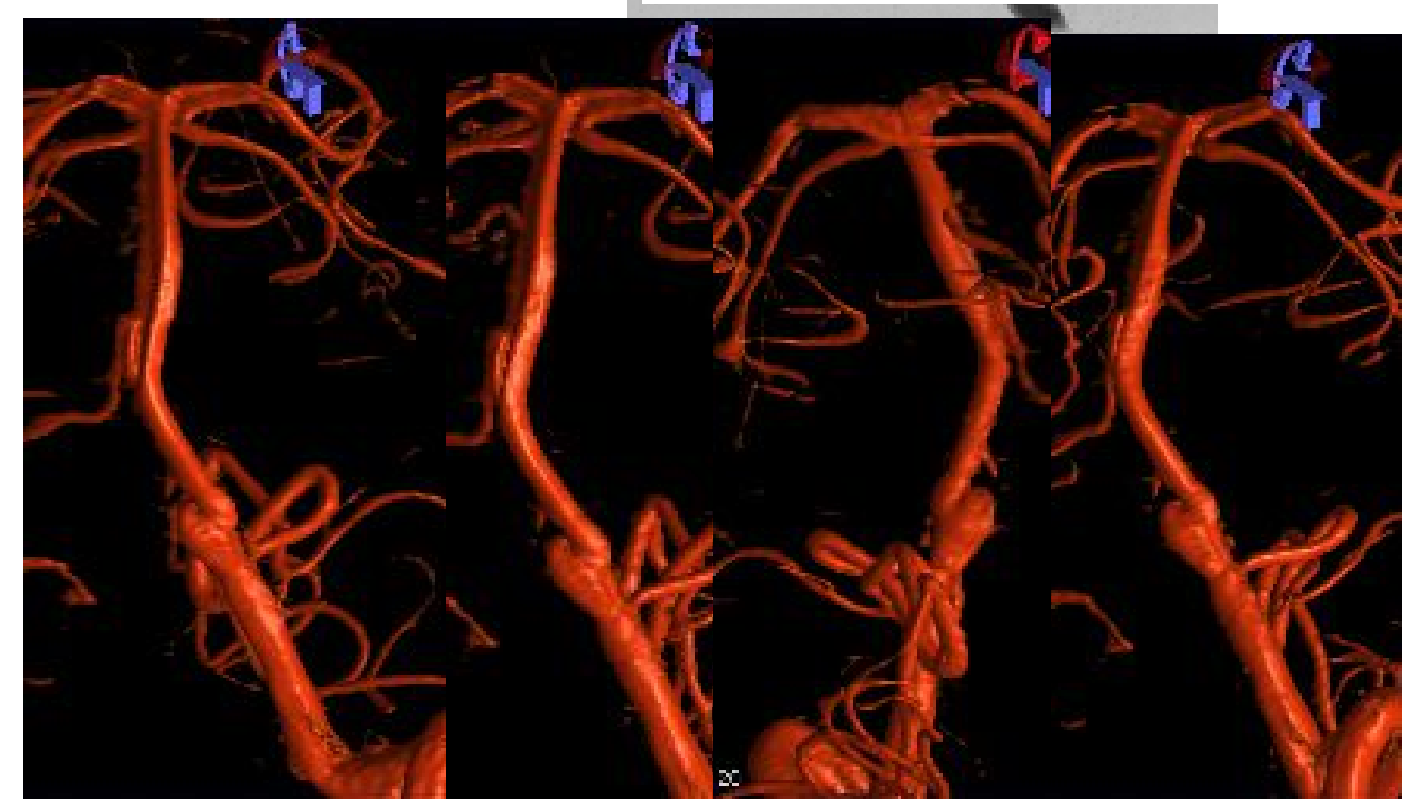
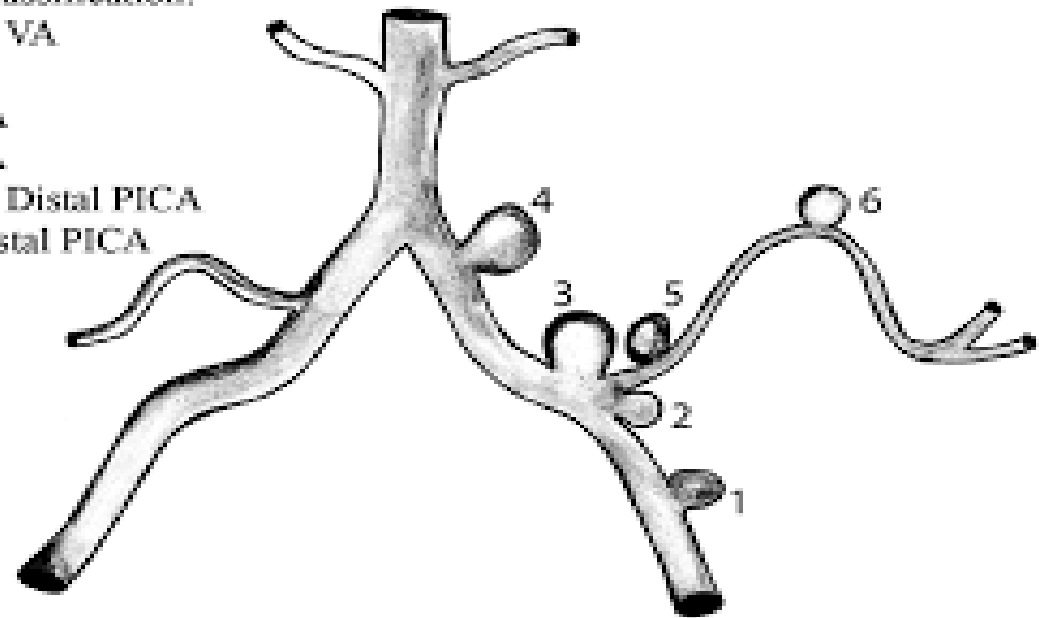
2= PrePICA

3= PostPICA

4= Distal VA

5= Proximal Distal PICA

6= Distal Distal PICA

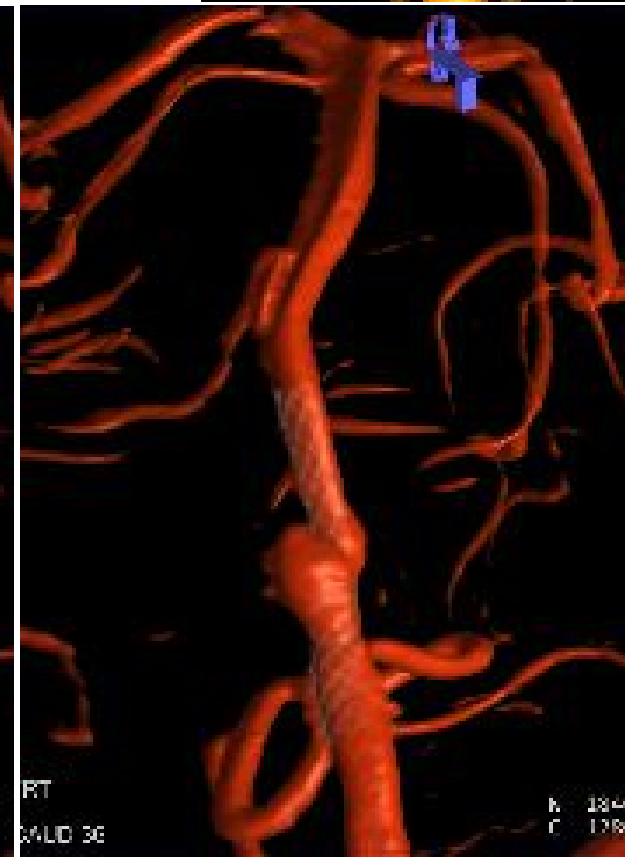
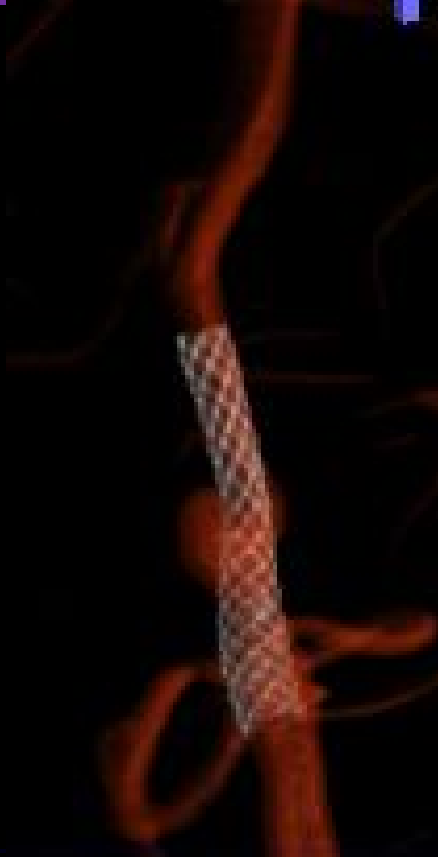
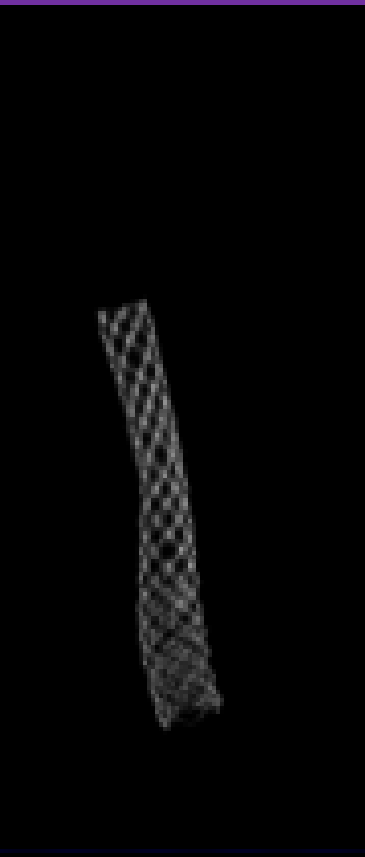


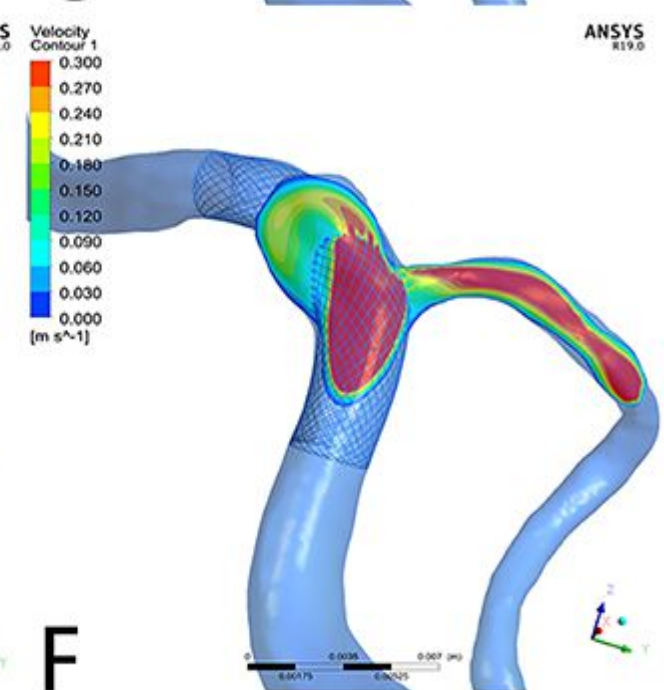
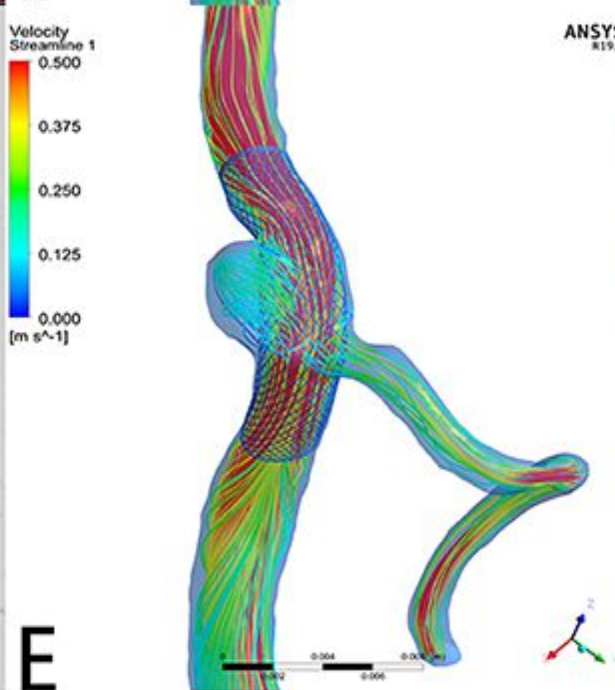
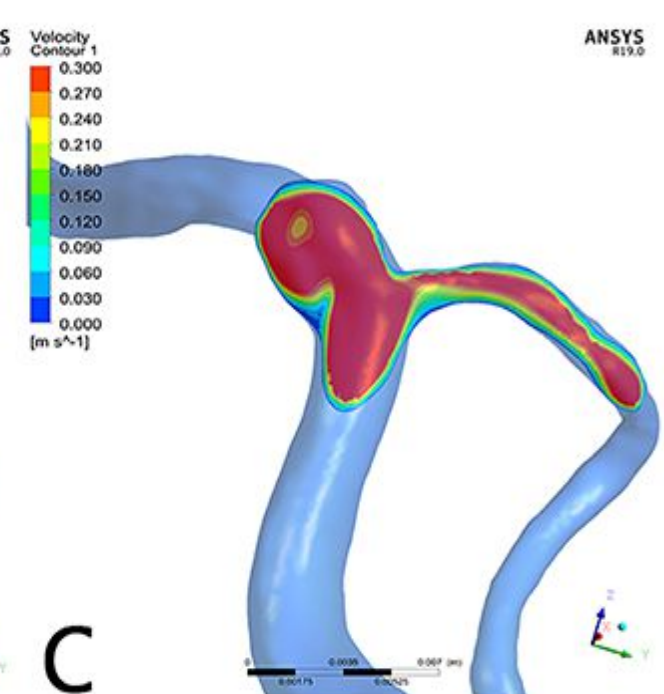
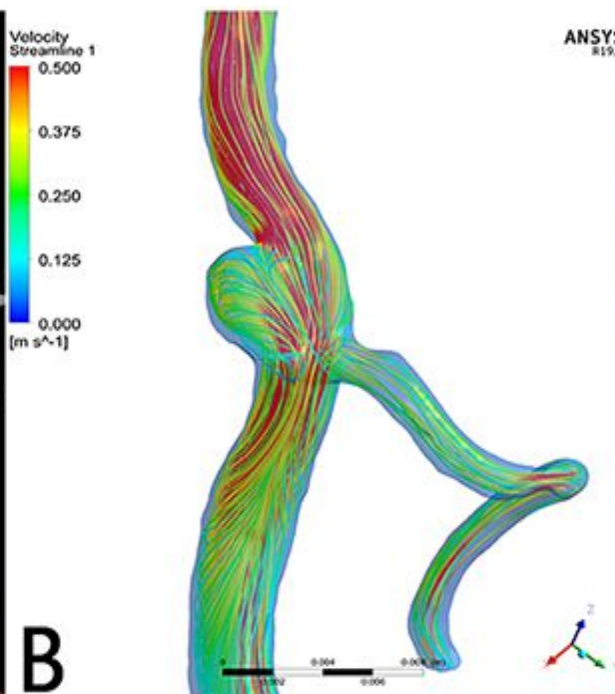
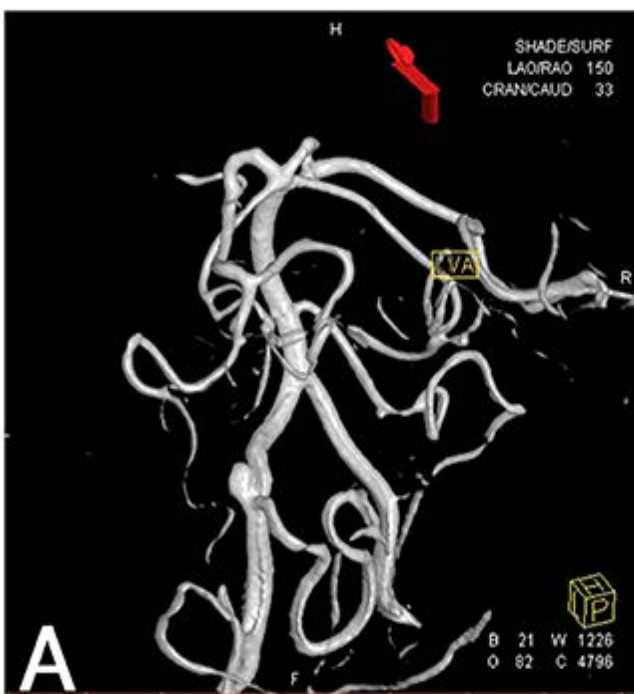
Aneurisma vertebral incidental-Tratamiento con Stent FD Evolve

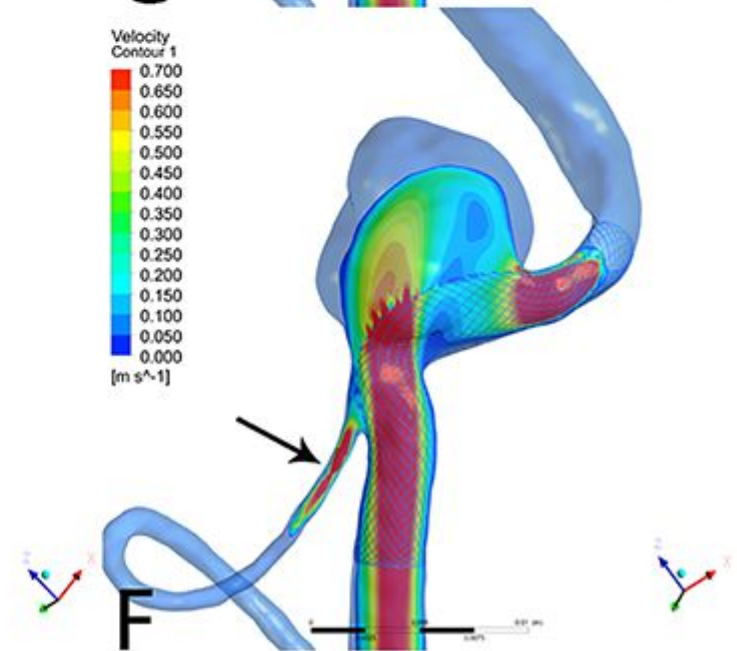
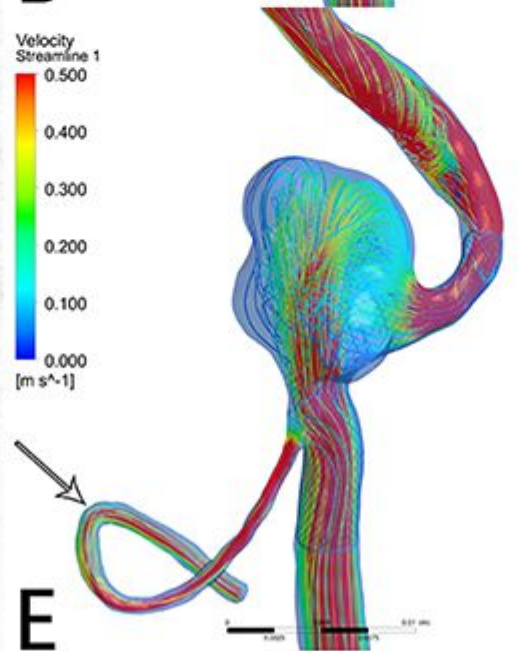
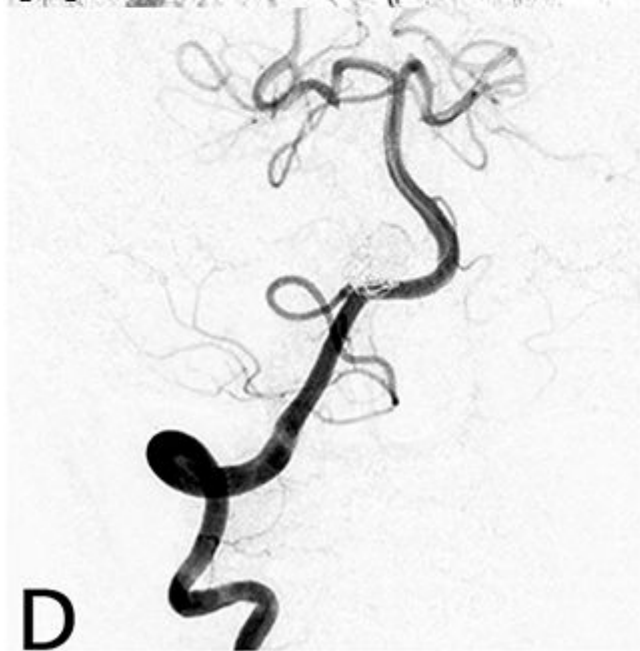
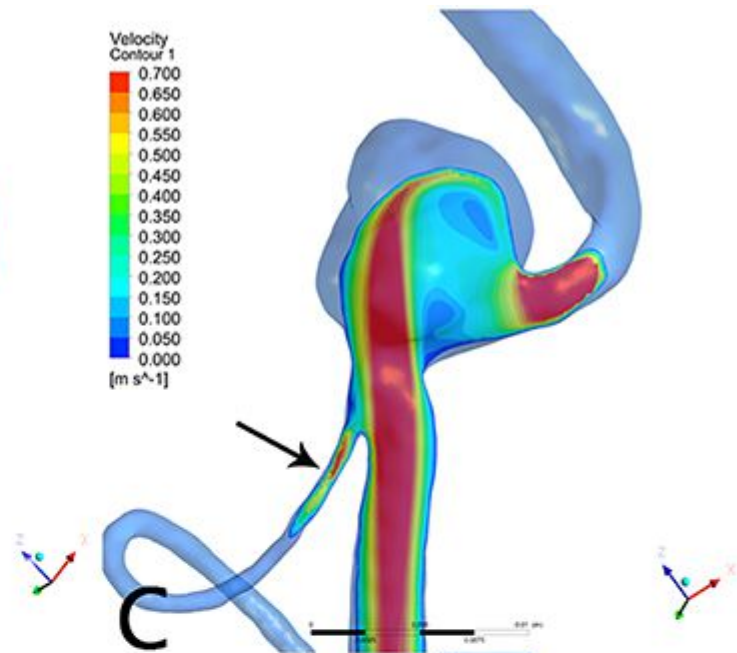
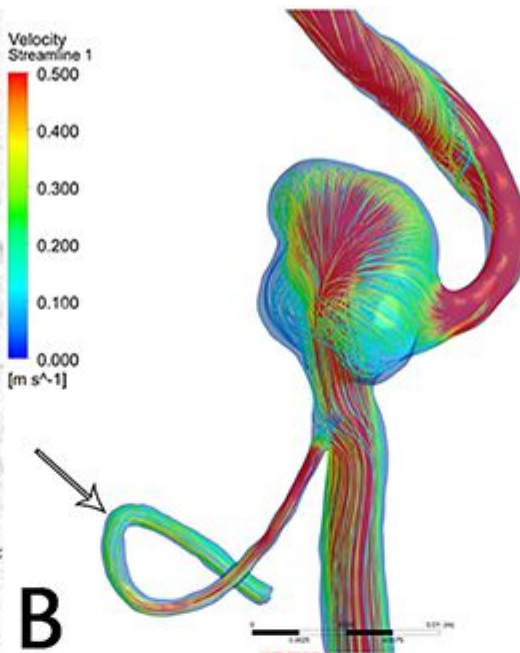
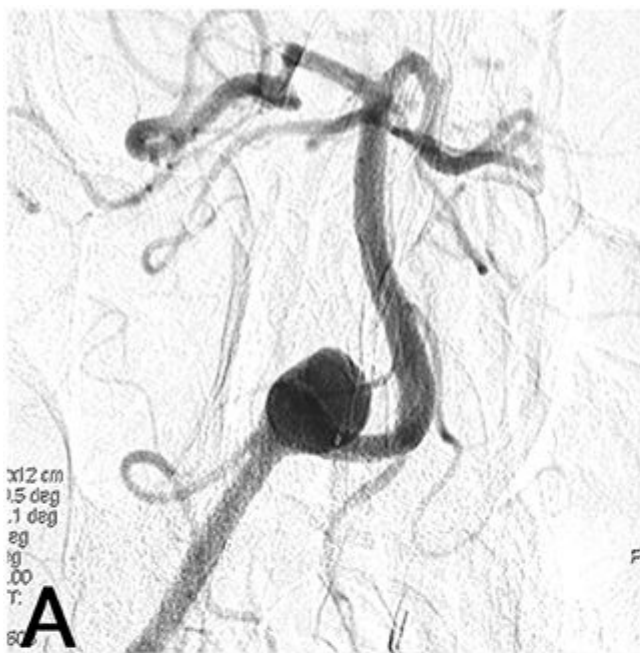
Aneurisma incidental en arteria vertebral intradural.

Aneurisma de cuello ancho y n relación con la arteria Pica.

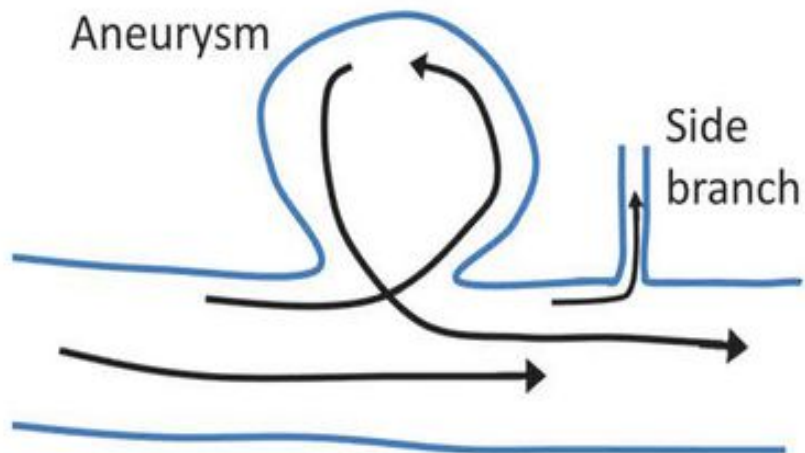
Tratamiento con **Stent Flow Diverter Evolve**.







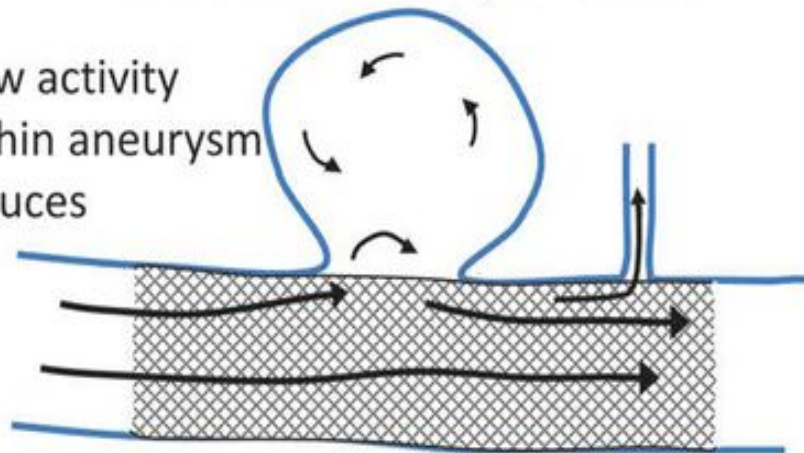
(a)



(b)

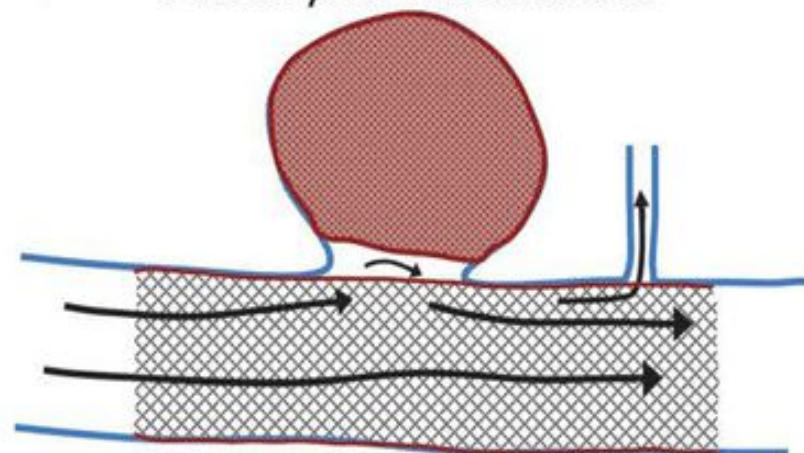
Flow Diverter Implantation

Flow activity within aneurysm reduces



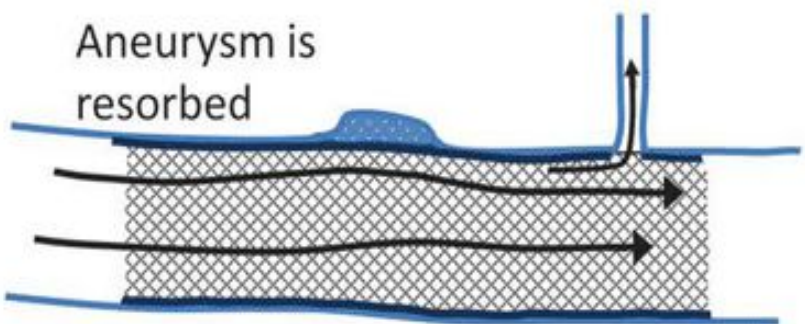
(c)

Aneurysm Thrombosis



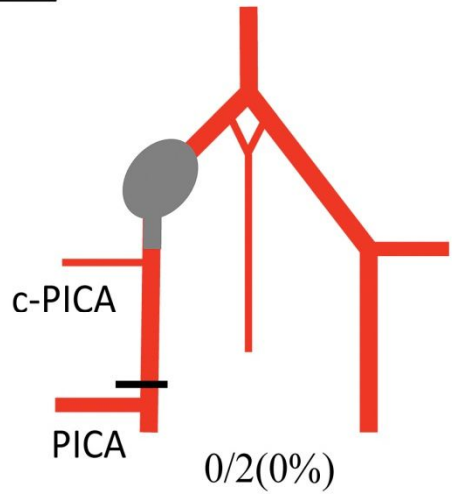
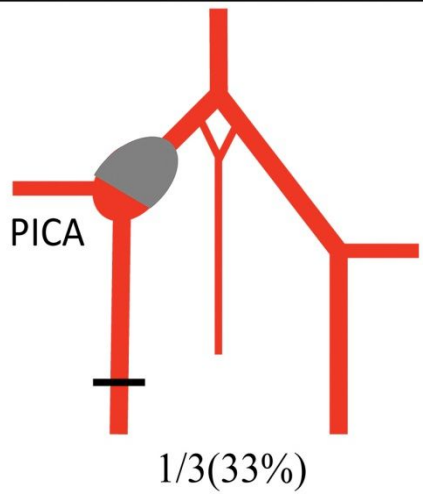
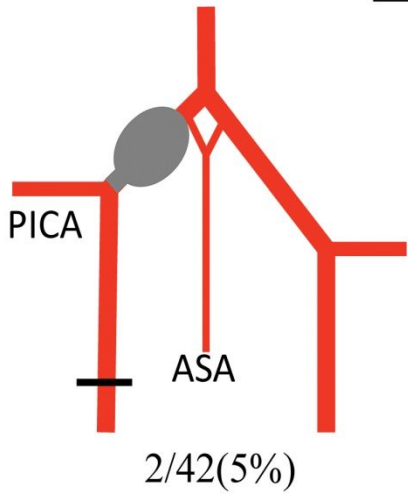
(d)

Vessel Remodeling

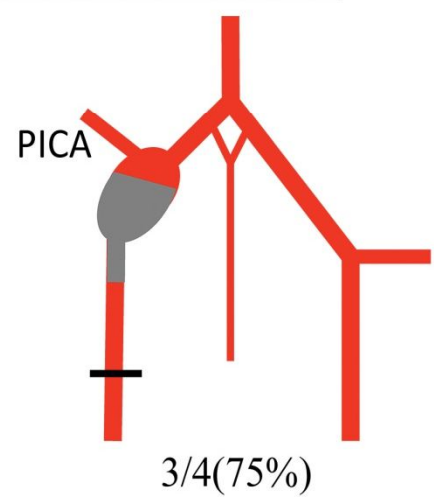
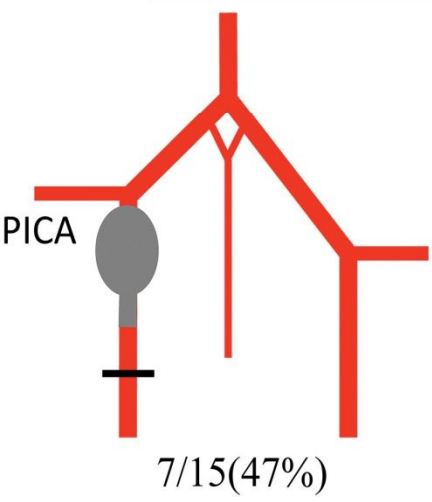


New arterial lining covers device

Distal VA stump group: 3/47(6%)



Proximal VA stump group: 10/19(53%)



Entire VA stump group: 17/34(50%)

